



January 15, 2025

**Subject: U.S. Army Corps of Engineers Regional General Permit 3  
Ridgeway's Rail Restrictions**

Dear Landowner:

In compliance with the Suisun Resource Conservation District's Regional General Permit 3 (Permit No. 2012-00258N) issued by the U.S. Army Corps of Engineers, there are work activity restrictions that affect your property between February 1 and August 31 of each year.

Your property has exterior levees in areas identified as being Ridgeway's Rail habitat (see highlighted area on enclosed maps). You may not conduct any work activities on or within 500 linear feet of your exterior levees between February 1<sup>st</sup> and August 31<sup>st</sup>.

Permit Special Condition:

10. Authorized work may not be conducted in the areas designated as Ridgeway's Rail habitat. No maintenance activities may occur on the crown or the tidal side of levees on property within 500 feet of delineated areas known to support Ridgeway's Rails during breeding season. **\*\*\* (February 1 through August 31)**

**AREAS OF RIDGEWAY'S RAIL HABITAT:**

- 1) Western Grizzly Bay (South of Lower Joice Island)
- 2) Lower Suisun Slough (below mouth of Cordelia Slough)
- 3) Lower Goodyear Slough
- 4) Cutoff Slough
- 5) Upper Suisun Slough (Northeast of Goat Island)

**CLUBS AFFECTED:**

- |                                    |                             |
|------------------------------------|-----------------------------|
| #205/206 CDFW Hill Slough          | #207 Lang Tule Club         |
| #213 Rush Ranch                    | #219 Volanti Duck Club      |
| #220 Joice Island Mallard Farms    | #419 Miramonte Duck Club    |
| #533 CDFW Joice Island             | #702 Morrow Island Land Co. |
| #703 The Friendly Godfather        | #705 Mulberry Land Co.      |
| #707 Goodyear Land Development Co. | #714/720 CDFW Goodyear      |
| #715 Fleetside Farms               | #717 CDFW Benicia Unit      |

**Directors**

Tony Vaccarella, President  
H. Kent Hansen  
Mike Lewis  
Dick Vanderkous  
Jim Waters

**Associate Directors**

Dennis Becker  
John Eudy  
John Telfer

**Staff**

Steven Chappell  
Executive Director  
John Takekawa PHD  
Operations Manager  
Kelli Perez  
Office Supervisor  
Caitlin Perez  
Office Assistant  
Tim Edmunds  
Water Manager/Biologist  
Jeff Taylor  
Water Manager/Biologist  
Marina Guzman  
Water Manager/Biologist  
Jesirae Collins  
Biologist  
Kristin Brandon  
Biologist  
Marque Mouton  
LJI Resident Caretaker

**SUISUN RESOURCE  
CONSERVATION DISTRICT**

2544 Grizzly Island Road  
Suisun City, CA 94585-9539  
(707) 425-9302  
(707) 425-4402 FAX  
[srcd@suisunrcd.org](mailto:srcd@suisunrcd.org)  
[www.suisunrcd.org](http://www.suisunrcd.org)

A copy of the 2012 U.S. Fish and Wildlife Service Biological Opinion in regards to Ridgeway's Rail restrictions is available at [www.suisunrcd.org](http://www.suisunrcd.org)

If you have any questions please contact me immediately.

Sincerely,



Steven Chappell  
Executive Director

Cc: Mr. Zachary M. Simmons, U.S. Army Corps of Engineers  
Mr. Andrew Raabe, U.S. Fish & Wildlife Service  
Ms. Lauren Thompson, CA Department of Fish & Wildlife

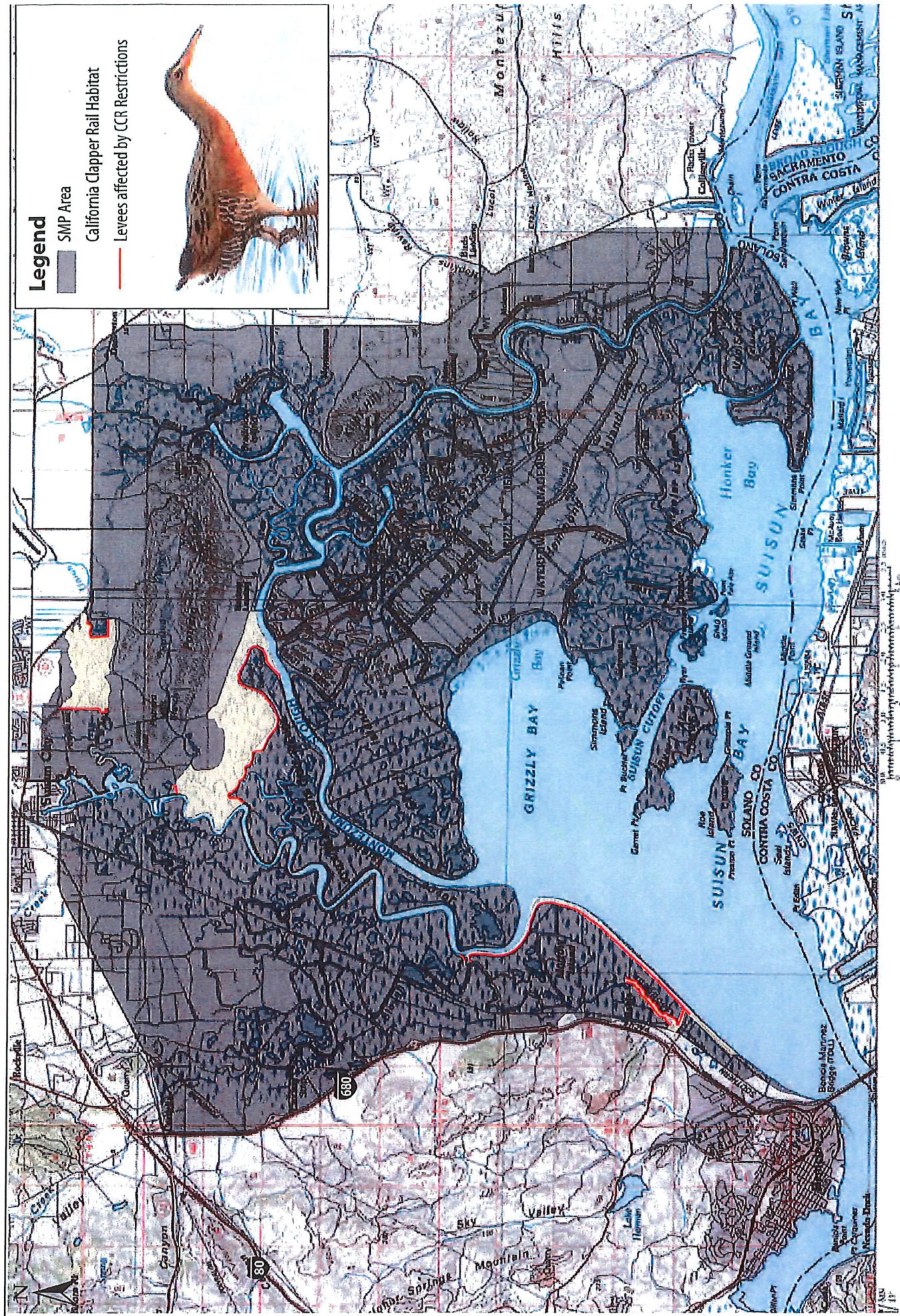


Figure 15  
California Clapper Rail Habitat in Suisun Marsh